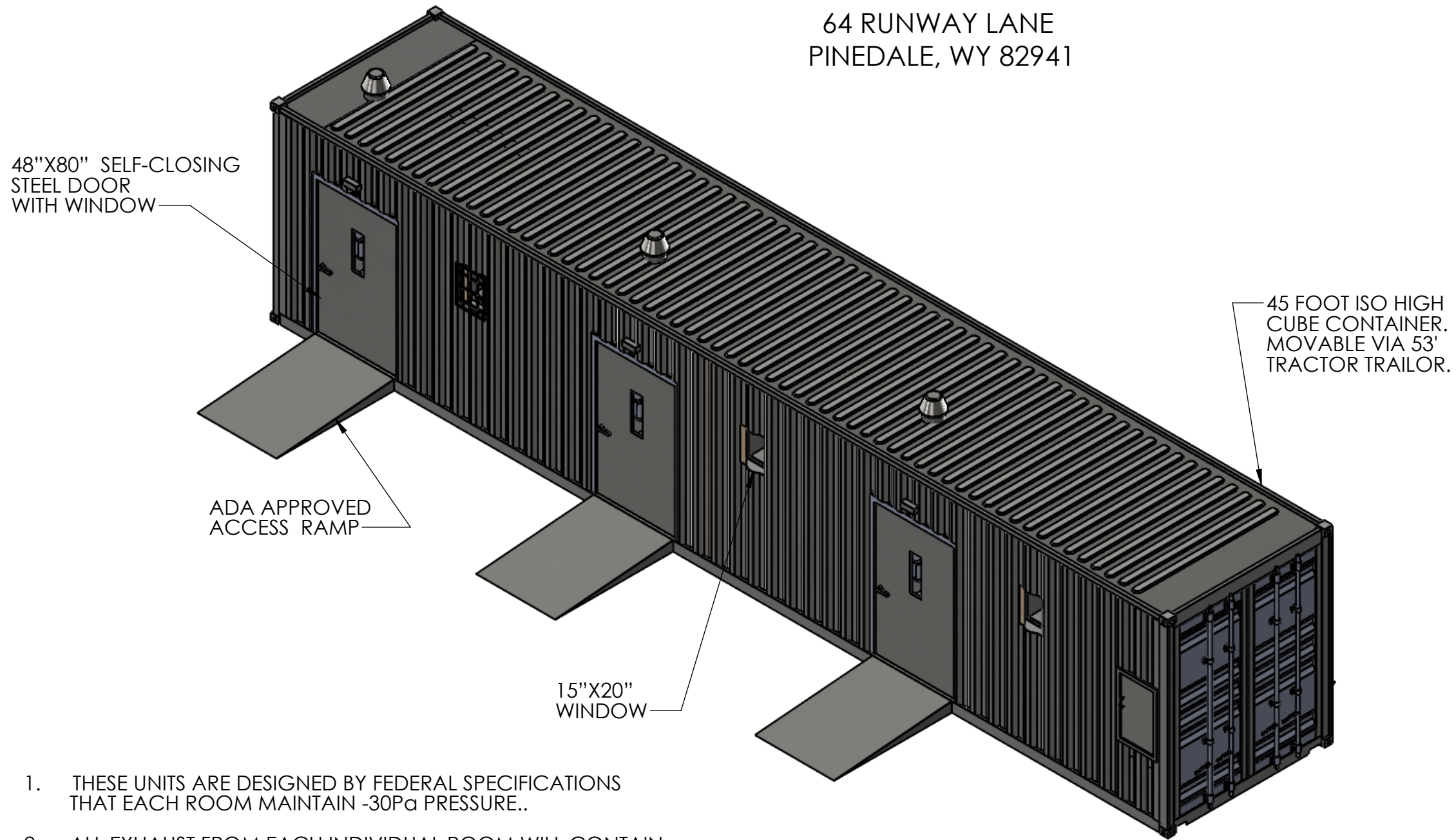


# CONTAINERIZED MEDICAL ISOLATION UNIT

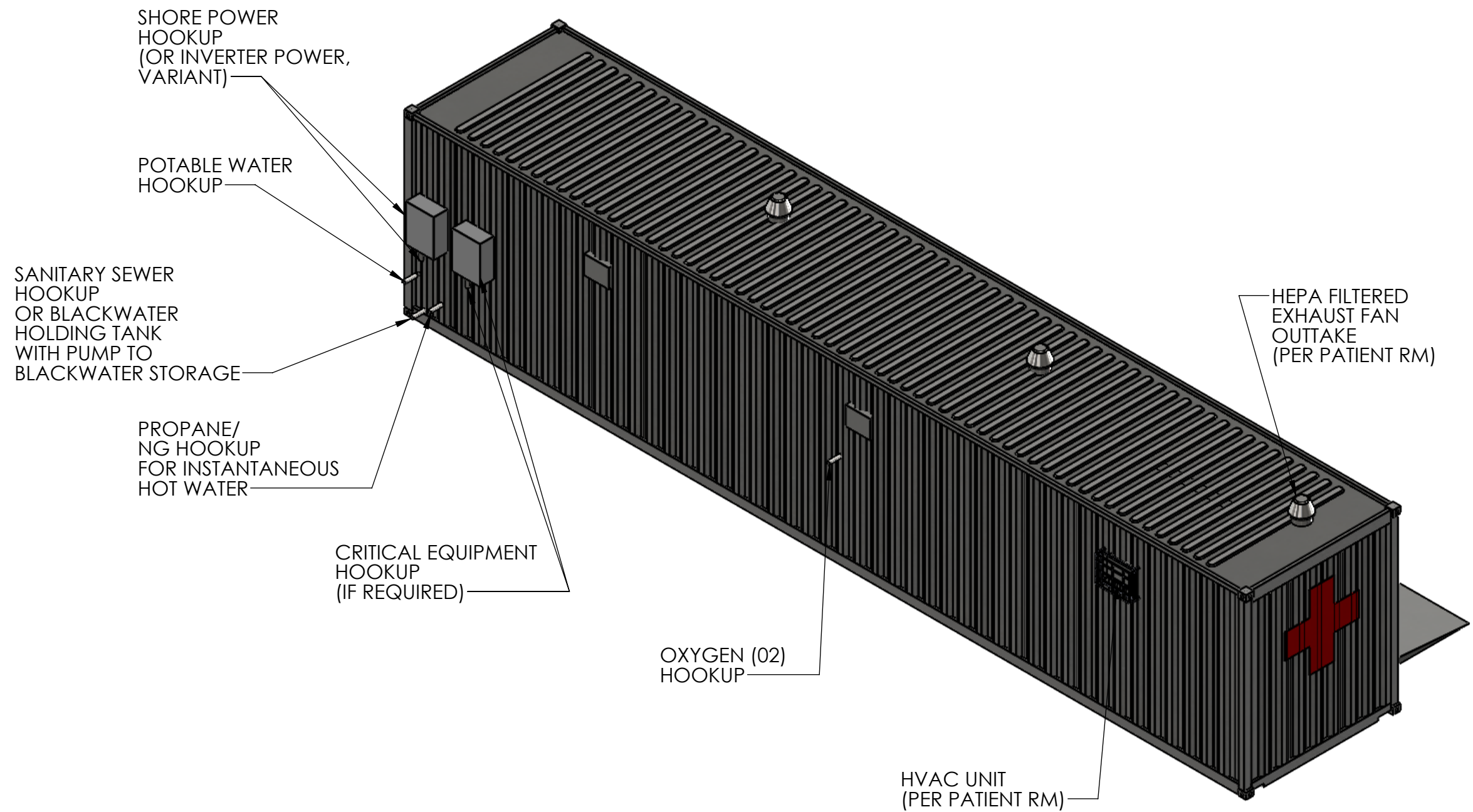
ENVIREMEDIAL SERVICES INC  
64 RUNWAY LANE  
PINEDALE, WY 82941



1. THESE UNITS ARE DESIGNED BY FEDERAL SPECIFICATIONS THAT EACH ROOM MAINTAIN -30Pa PRESSURE..
2. ALL EXHAUST FROM EACH INDIVIDUAL ROOM WILL CONTAIN HEPA FILTRATION AND UV DISINFECTION.
3. UNITS ARE CUSTOMIZABLE TO THE NEEDS OF THE CUSTOMER. MODIFICATIONS TO EXISITNG SYSTEM CAN BE CHANGED IMMEDIATELY.
4. ALL INFORMATION CONTAINED IN THIS DRAWING IS PROPERTY OF ESI. ANY REPRODUCTION, IN PART OR WHOLE, WITHOUT WRITTEN PERMISSION FROM ESI IS PROHIBITED.

Drawn By	HK	Date	4/2/20	ENVIREMEDIAL SERVICES INC. 64 RUNWAY LANE, PINEDALE, WY, 82941		
Approved By	GK	Date	4/2/20	Title CONTAINERIZED ISOLATION UNIT		
Coating	2 PART EPOXY			Size	Drawing No.	Rev
Weight	18,500			B	Containerized Med Unit	A
Material	VARIOUS			Scale	1:53	Projection
				1 of 9		

# MEDICAL ISOLATION UNIT: REAR UTILITIES VIEW



1. SEE SHEET 1 FOR NOTES.

Rev	Drawing No.		
A	Containerized Med Unit		
Scale	1:55	Projection	2 of 9

4

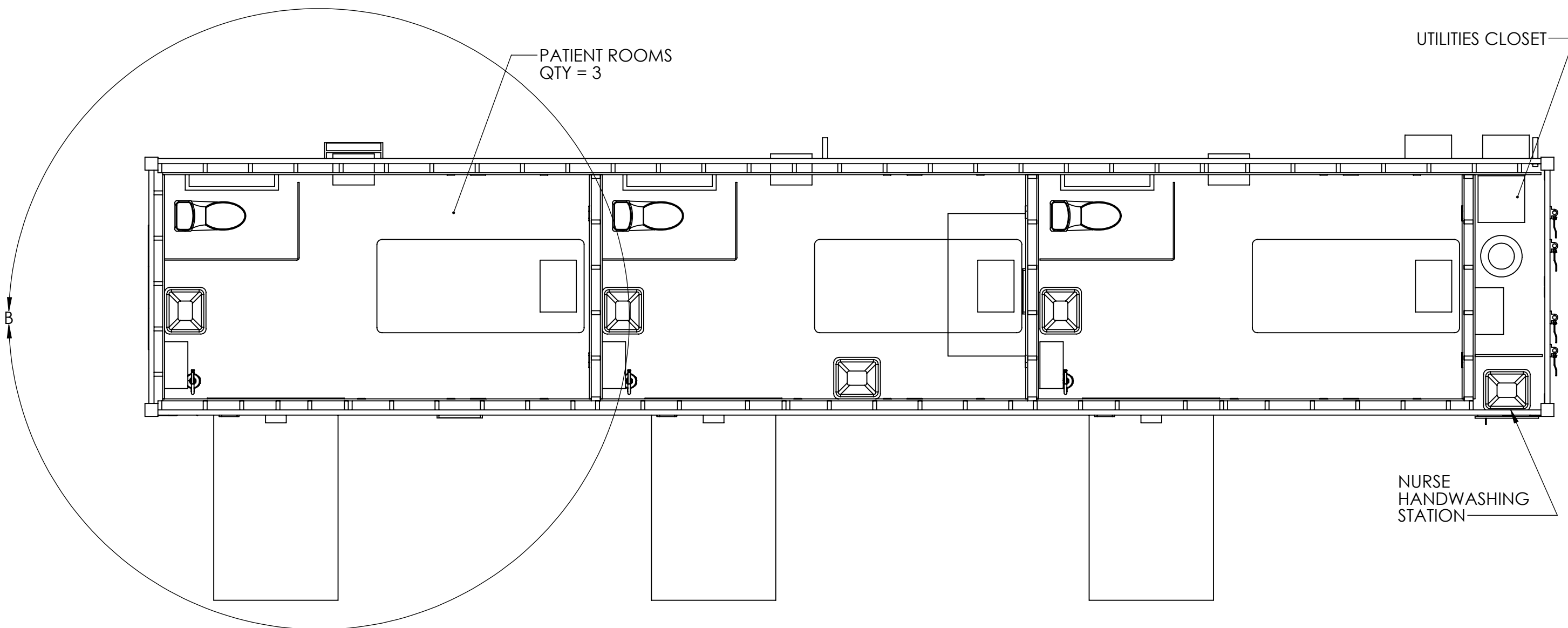
3

2

1

# 3-ROOM MEDICAL ISOLATION UNIT: CONTAINER FLOOR PLAN

ESI'S CONTAINERIZED MEDICAL ISOLATION UNIT CONSISTS OF 3 SEPARATE PATIENT ROOMS AND A UTILITIES CLOSET, HOUSED IN A 45 FOOT SHIPPING CONTAINER. THE UNIT CAN BE CONFIGURED TO HOOK UP TO CITY WATER, SEWER AND POWER OR RUN AS A STANDALONE UNIT WITH TANK STORAGE AND A SOLAR PACKAGE. BOTH OPTIONS ARE FEATURED IN THIS DRAWING.



1. SEE SHEET 1 FOR NOTES.

Rev	Drawing No.		
A		Containerized Med Unit	
Scale	1:40	Projection	3 of 9

4

3

2

1

# 45' CONTAINER CONSTRUCTION: SPECIFICATIONS

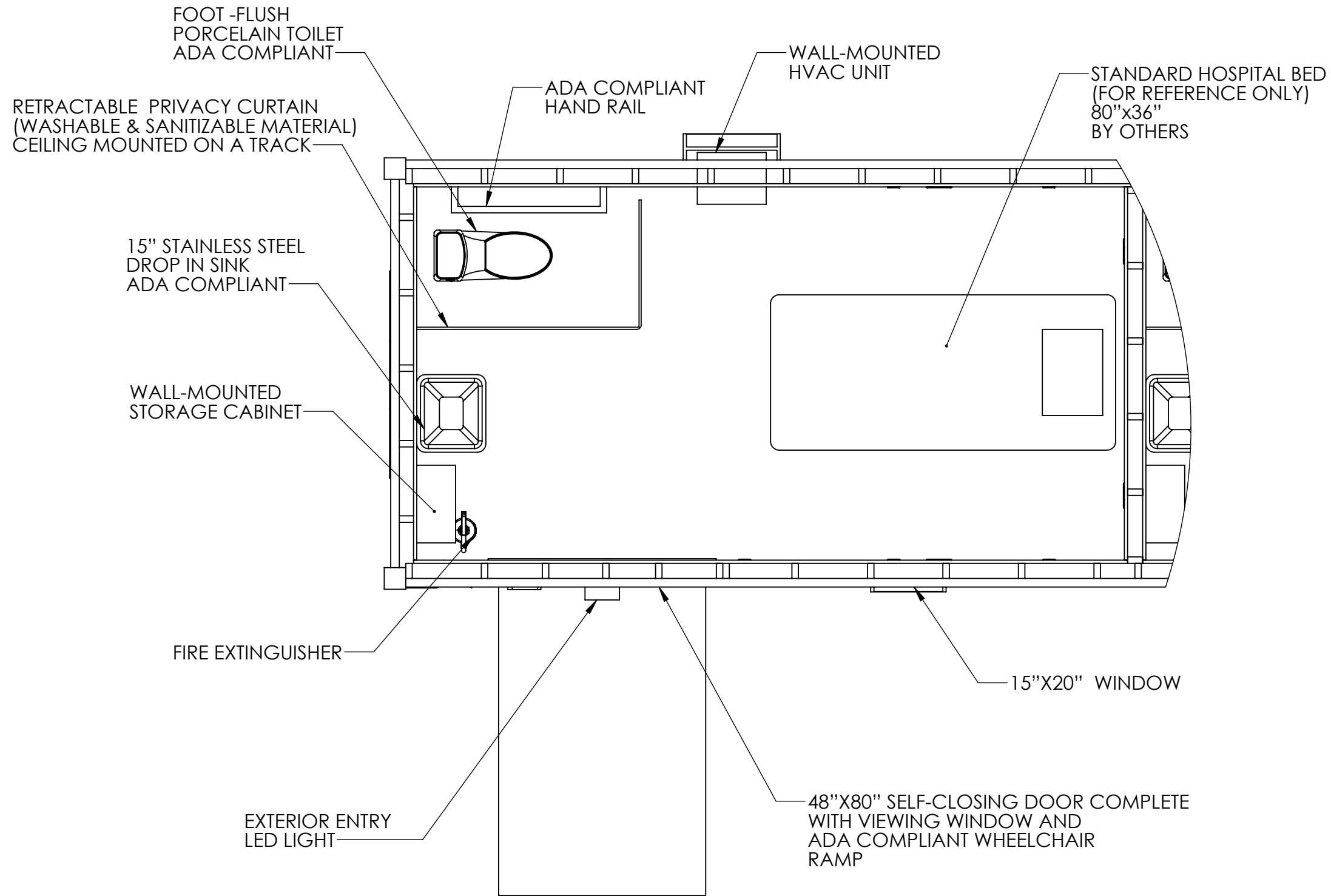
COMPONENT	STANDARD	SPECIFICATION (IF APPLICABLE)
45' ISO HIGH CUBE CONTAINER	ISO 1496-1	45' X 8' X 9.5'
2X4" STUDDED WALLS		FRAMED 16" ON CENTER
1.5" FOAM BOARD INSULATION	ASTM 578, UL CLASSIFICATION 197	THERMAL RESISTANCE R=7.5
HUNG SHEETROCK INTERIOR	ASTM C-1396	5/8" MOLD GUARD TOUGH ROCK
SANI-WALL MEDICAL GRADE DRYWALL FINISHER	CHEMICAL RESISTANCE-ASTM D-1308 7 DAY EXPOSURE FLAMMABILITY- ASTM D-635	
EMT CONDUIT & FITTINGS	UL	
THHN WIRE	UL	OIL/WATER RESISTANT
2" ABS DRAIN, WASTE, AND VENT PIPE	ASTM D-2661	BLACK ABS
1" POTABLE WATER LINES	ASTM F877-20	PEX
1" BRAISED COPPER OXYGEN LINES	ASTM B-75	STREAMLINED COPPER TUBING (UNS C12200 GRADE)
48"80" STEEL, HYDRAULIC SELF-CLOSING DOORS	FEDERAL STANDARD*	
DUAL CAPACITY HVAC UNIT	UL	5000BTU/HR, 200SQFT RATED
INSTANTANEOUS WATER HEATER	ETL	11 GPM AT 45° RISE. 199,000BTUH
20 GAL PRESSURE TANK	NSF, ISO 9001	
NEMA 3R ELECTRICAL PANEL BOARD	UL 508A	RATED FOR OUTDOORS, WATERPROOF
1 PHASE, POWER HOOKUP	UL	240/120V, 100 AMP, 60HZ

\* = FEDERAL STANDARD AS DIRECTED BY THE UNITED STATES ARMY CORPS OF ENGINEERS BUILD SPECIFICATIONS FOR A2HC CONTAINERIZED UNITS.

1. SEE SHEET 1 FOR NOTES.

Rev	Drawing No.	
A	Containerized Med Unit	
Scale	1:40	Projection
		4 of 9

# PATIENT ISOLATION ROOM: FLOOR PLAN



NOTE: EACH ROOM WILL BE OUTFITTED WITH  
A DIMMABLE OVERHEAD LED LIGHT ON  
3-WAY SWITCH.

COMPONENT	SPECIFICATION
ROOM SQ FOOTAGE	100.4 SQFT
ROOM LENGTH	13.625 FT
ROOM WIDTH	7.25 FT
DOOR HEIGHT	80 INCHES
DOOR WIDTH	48 INCHES
WINDOW HEIGHT	20 INCHES
WINDOW WIDTH	15 INCHES

1. SEE SHEET 1 FOR NOTES.

Rev	Drawing No.	
A	Containerized Med Unit	
Scale	1:40	Projection
		5 of 9

4

3

2

1

# PATIENT ISOLATION ROOM: SPECIFICATIONS

COMPONENT	QUANTITY	STANDARD	SPECIFICATION (IF APPLICABLE)
QUAD RECEPTICLE OUTLETS	4	FEDERAL STANDARD*	
DUPLEX RECEPTICLE OUTLETS	6	FEDERAL STANDARD*	
DEDICATED CIRCUIT OUTLET (SINGLE)	1	FEDERAL STANDARD*	DENOTED BY ORANGE COVER
ABC FIRE EXTINGUISHER	1	FEDERAL STANDARD*	5 LB
15" STAINLESS STEEL SINK	1	ADA COMPLIANT	
GOOSENECK FAUCET W PADDLE HANDLES	1	ADA COMPLIANT	
PORCELAIN FOOT FLUSH TOILET	1	ADA COMPLIANT	LOW FLOW
COMMODOE HAND RAIL	1	ADA COMPLIANT	
DUAL CAPABILITY HVAC UNIT W REMOTE	1	FEDERAL STANDARD*	5000 BTU/HR, 200 SQFT RATED, 100 CFM
EXHAUST FAN W HEPA FILTRATION	1	FEDERAL STANDARD*	250 CFM TO CREATE NEGATIVE PRESSURE
OXYGEN LINE COMPATIBLE HOOKUP	YES	FEDERAL STANDARD*	BRAISED COPPER LINE
HEATED WATER	YES	FEDERAL STANDARD*	11 GPM
4.8° WHEELCHAIR RAMP	YES	ADA COMPLIANT	4.8° INCLINE, 1 FOOT LENGTH/INCH RISE
48"X79" PATIENT RM DOORWAY	YES	FEDERAL STANDARD*	SELF-CLOSING
100 SQFT PATIENT RM	YES	FEDERAL STANDARD*	13.625FT X 7.25 FT
DIMMABLE LED ROOM LIGHTING	YES	FEDERAL STANDARD*	4FT, 50 WATT DIMMABLE , VAPOR TIGHT LED
EXTERIOR ENTRY LIGHT	YES	FEDERAL STANDARD*	50 WATT BRONZE LED, 6800 LUMENS
SANITIZABLE, WASHABLE FLOORING	YES	FEDERAL STANDARD*	SEAMLESS LINOLIUM
SANITIZABLE, WASHABLE WALLS & CEILING	YES	FEDERAL STANDARD*	SANI-WALL DRYWALL FINISHER
COMPLETE ISOLATION FROM ADJOINING ROOMS	YES	FEDERAL STANDARD*	SILICON SEALS ON FLOOR, CEILING, AND ADJOINING WALLS

\* = FEDERAL STANDARD AS DIRECTED BY THE UNITED STATES ARMY CORPS OF ENGINEERS BUILD SPECIFICATIONS FOR A2HC CONTAINERIZED UNITS.

1. SEE SHEET 1 FOR NOTES.

Rev	Drawing No.		
A	Containerized Med Unit		
Scale	1:40	Projection	6 of 9

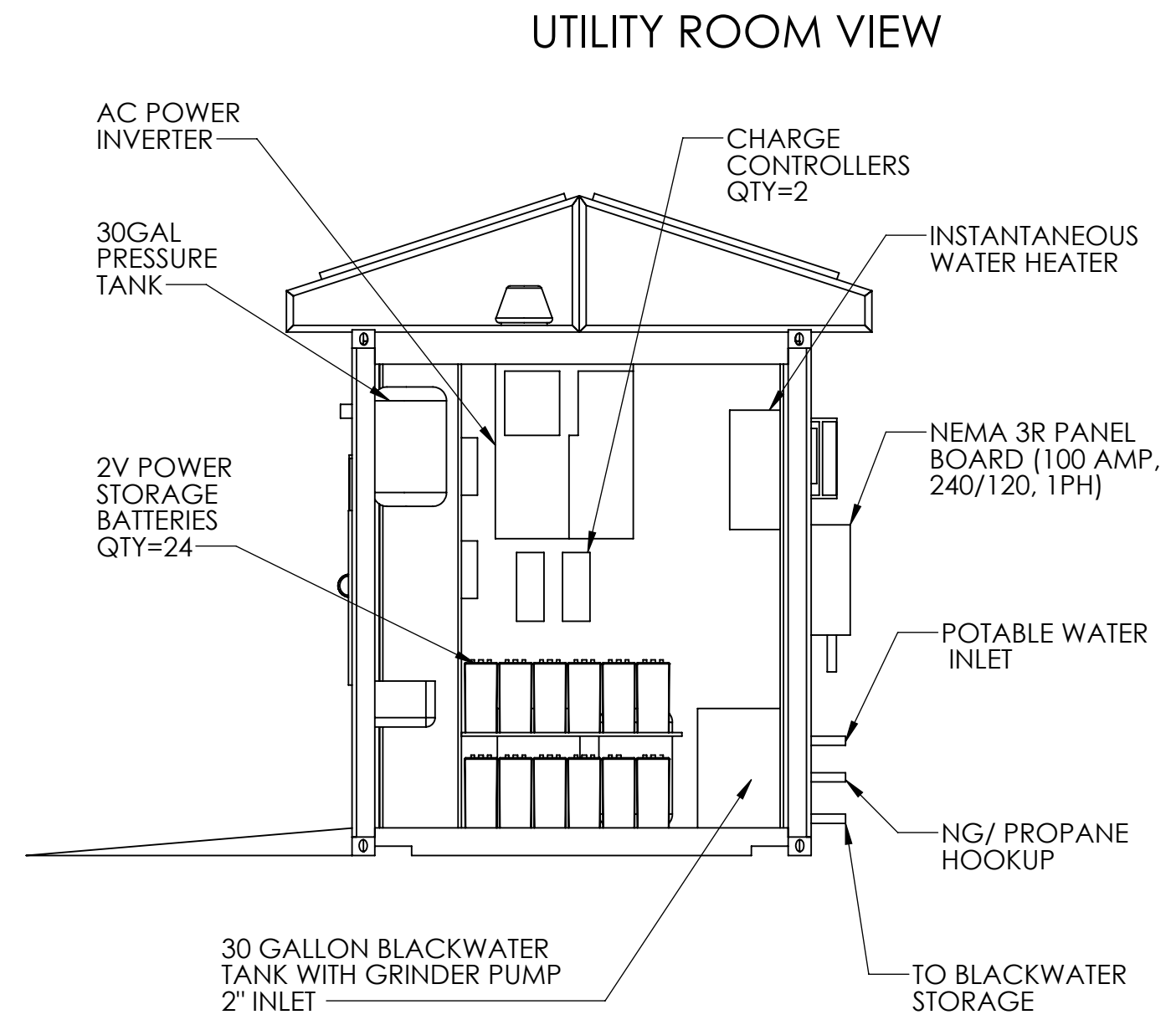
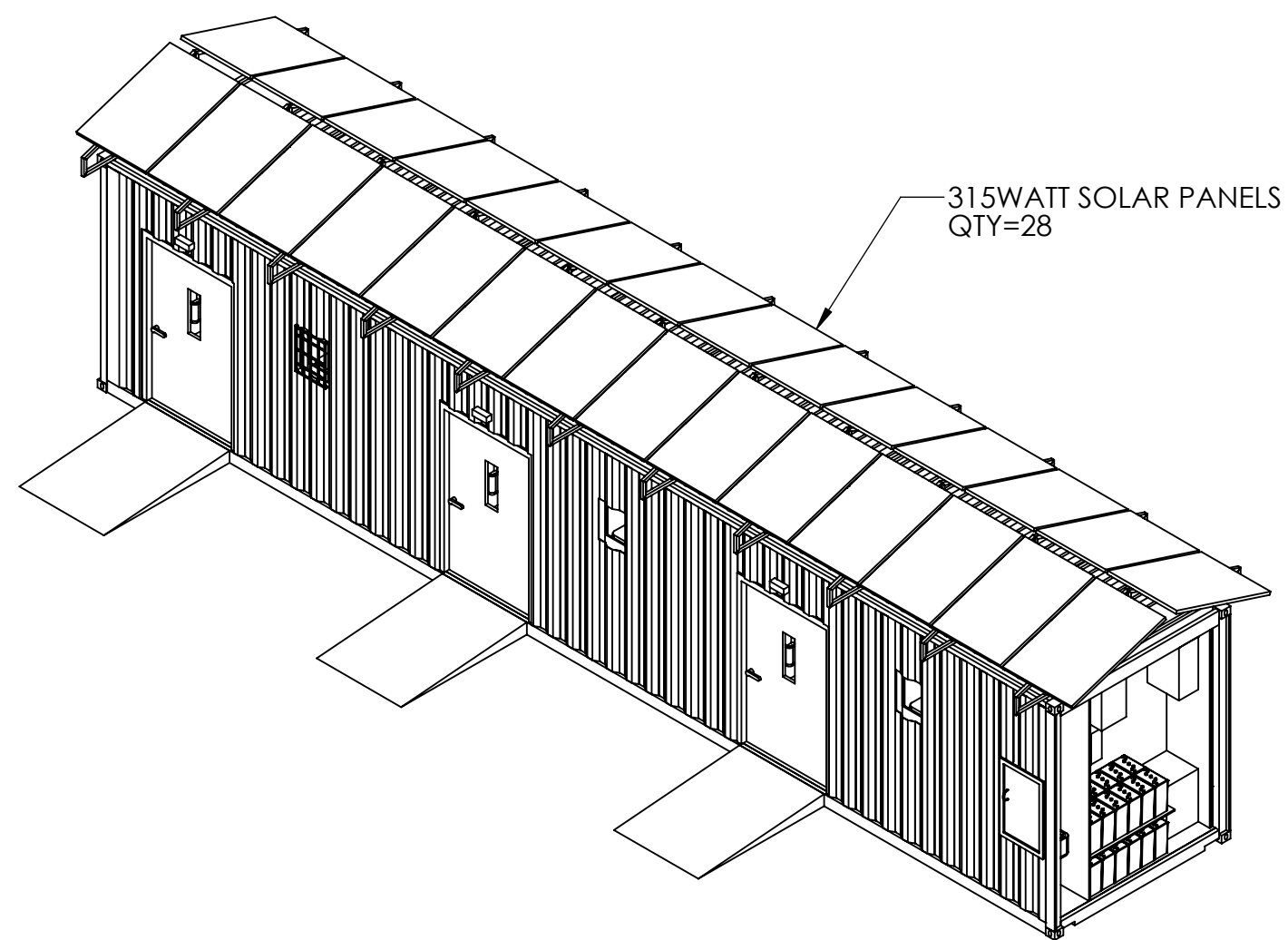
4

3

2

1

# STANDALONE SOLAR PACKAGE WITH TANK STORAGE



COMPONENT	QTY	SPECIFICATION (IF APPLICABLE)
SOLAR PANELS	28	315 WATT
SOLAR PANEL BRACKETS	22	MANUFACTURED BY ESI TO MATCH THE LATITUDE OF DESTINATION
PURE SINE WAVE AC POWER INVERTER	1	13,200 W, 120/240 VAC/48VDC
2V, 1284 AH BATTERY	24	48VDC IN-SERIES SYSTEM

1. SEE SHEET 1 FOR NOTES.

Rev	Drawing No.	
A	Containerized Med Unit	
Scale	1:70	Projection
		7 of 9

4

3

2

1

D

D

# SOLAR PACKAGE W/ TANK STORAGE: SPECIFICATIONS

COMPONENT	SPECIFICATION (IF APPLICABLE)
SOLAR DAILY PRODUCTION RATE	48.6 kWh SUMMER 24.3 kWh WINTER
BATTERY SERVICE LIFE	5 YR
EXTERNAL POTABLE WATER STORAGE TANK	350 OR 500 GAL
EXTERNAL BLACKWATER STORAGE TANK	500 OR 700 GAL
BLACKWATER HOLDING TANK WITH GRINDER PUMP	30 GAL

C

C

B

B

A

A

1. SEE SHEET 1 FOR NOTES.

Rev A	Drawing No. Containerized Med Unit
Scale 1:70	Projection 8 of 9

4

3

2

1



4

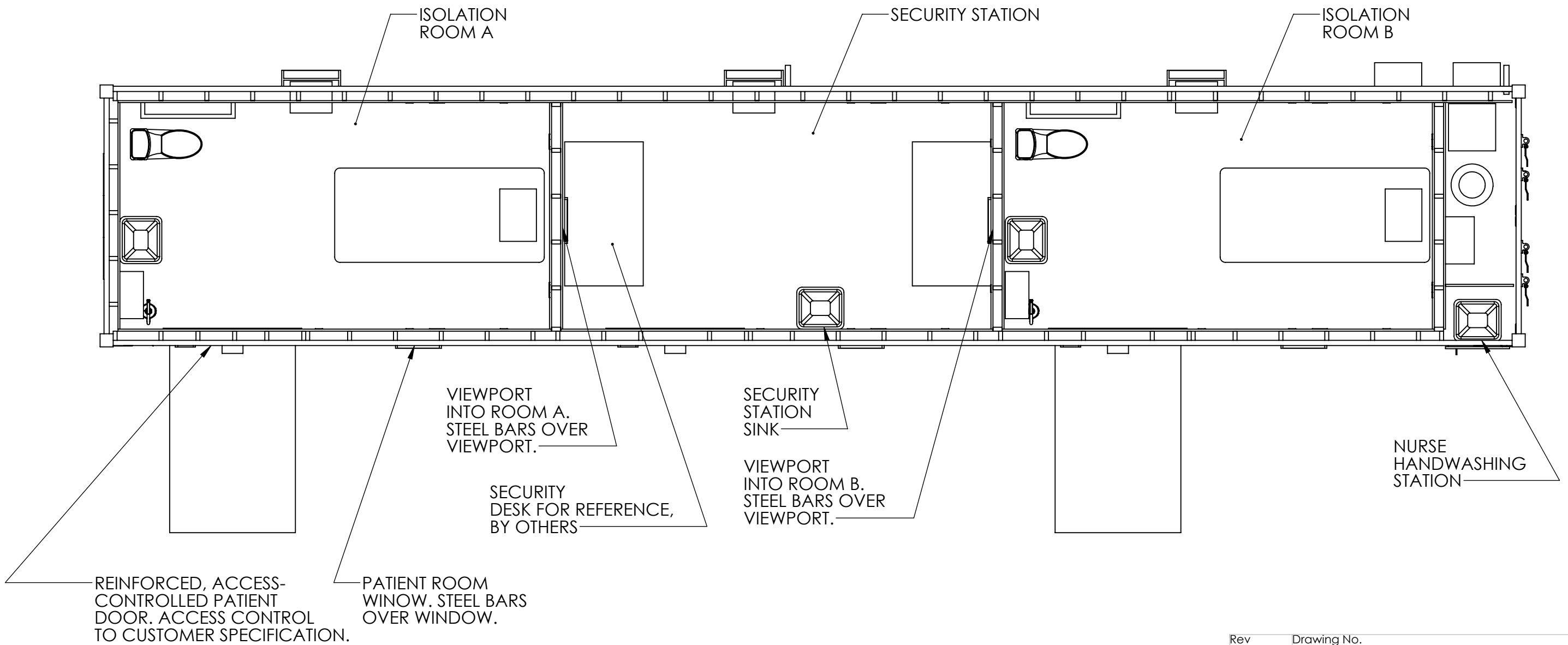
3

2

1

# CORRECTIONAL FACILITIES ISOLATION CONTAINER

THIS CONTAINER HOUSES SECURE, ACCESS CONTROLLED ISOLATION UNITS DESIGNED TO SUPPORT INMATES WHO NEED TO BE ISOLATED FROM THE REST OF THE POPULATION BUT CANNOT BE RELEASED. THE UNIT CONSISTS OF 2 PATIENT ISOLATION ROOMS, AND A CENTRALIZED SECURITY STATION WITH VIEWPORTS INTO EACH ROOM. PATIENT ROOMS MEET THE SAME SPECIFICATIONS AS THE STANDARD UNITS, WITH THE ADDED SPECIFICATIONS OF STEEL BARS ON ALL WALL PENETRATIONS, AND HARDENED STEEL, ACCESS CONTROLLED DOORS. THE GUARD STATION IS SHOWN FOR REFERENCE WITH DESKS CENTERED ON THE PATIENT ROOM VIEWPORTS, AND A DEDICATED SINK FOR SECURITY PERSONNEL.



1. SEE SHEET 1 FOR NOTES.

Rev	Drawing No.	
A		Containerized Med Unit
Scale	1:40	Projection
		9 of 9

4

3

2

1